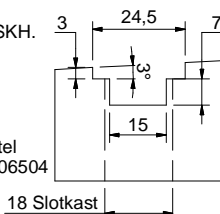


Advies
Gebruik RVS schroeven 4,0 x 40 mm die goedgekeurd zijn door SKH.

De nastelbare sluitkom kan voor zowel de bovenste, als de onderste haakschoot gebruikt worden.

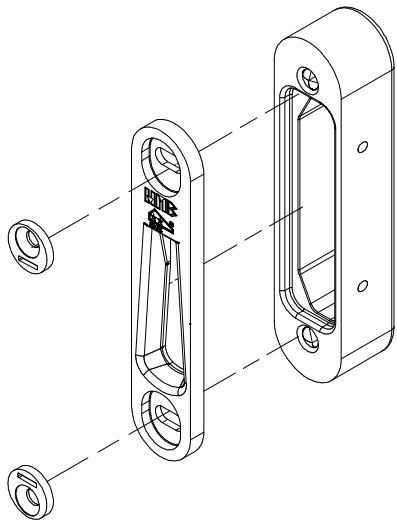
LET OP: Maten controleren in het werk!
75* : Als meer ruimte voor kabellus gewenst is, kunt u de motor 20 mm dieper uitfrez.

T-Beitel
Art. nr. 406504

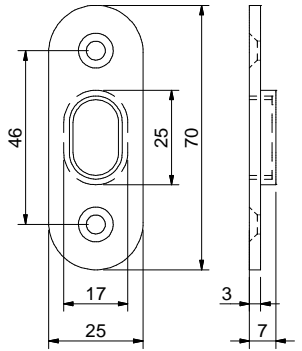
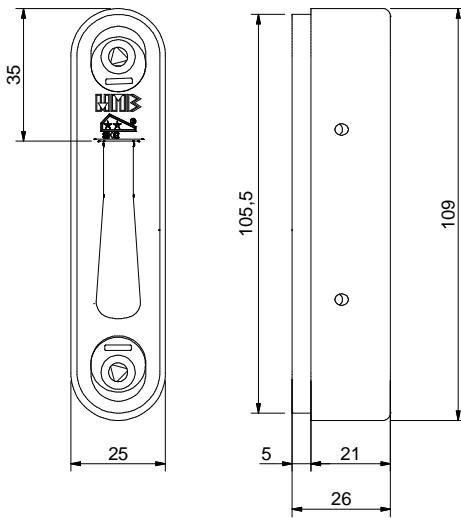


Treatment	Units	MM	Roughness	Unspecified tolerances	According NEN-ISO 1101
Aftertreatment	Not on scale bases	25	√ 3.2	Dim ± 0.2 Angle ± 0.5°	☐ ☐
Layer thickness	Reference	(25)		Engineer: B. Pongers	Checked by: R. Bournans
Description: HMB MPS Mototronic Serie 007 VPL 1700 DM 55 AP			Scale	Date: 26-7-2013	Date: 06-05-2014
 <small>POSTBUS 151 3400 AD IJSELSTEIN, HOLLAND TELEPHONE: 0031 - (0)30 - 6877940 FAX: 0031 - (0)30 - 6875688 E-MAIL: info@hmb.nl</small>			Revision	Antikel number:	
			00	500298	
			Projection	Drawing number	
			A2	400.500298	

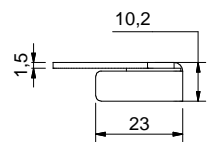
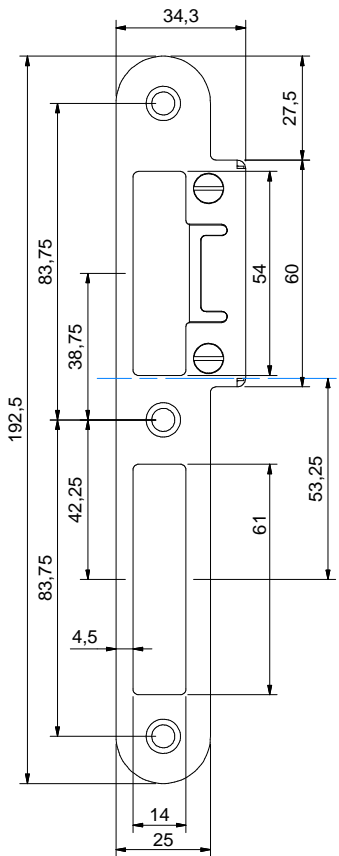
THIS DRAWING REMAINS PROPERTY OF HMB PROFIT LOCKS & TOOLS AND MAY NOT BE COPIED WITHOUT OUR WRITTEN CONSENT.



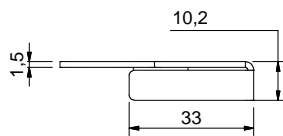
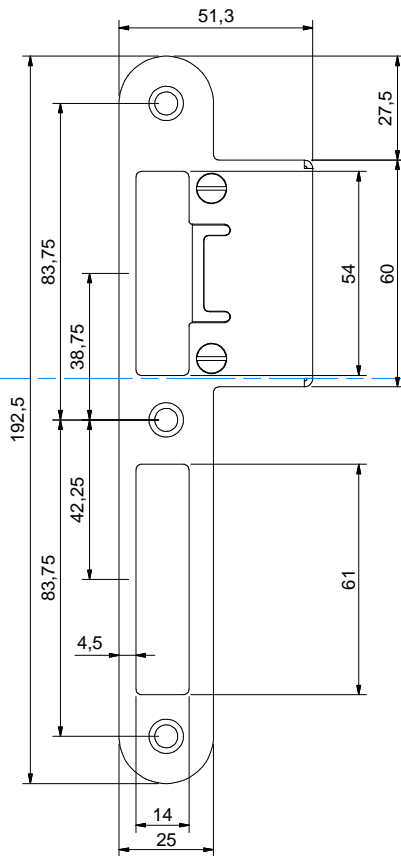
Nastelbare
Sluitkom en Sluitplaat
tbv Haakschoot
Art. nr. 706300



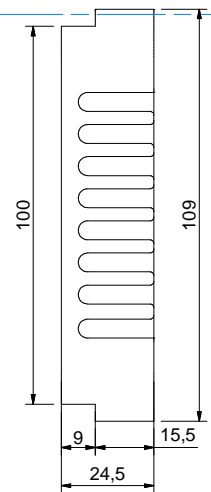
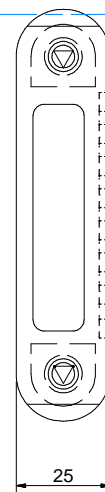
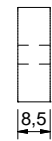
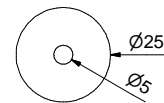
Magneet tbv
(Auto)Motortronic
Art. nr. 200076



Verstelbare Sluitplaat
Korte Lip
Art. nr. 706380 (DIN Links)
Art. nr. 706390 (DIN Rechts)



Verstelbare Sluitplaat
Lange Lip
Art. nr. 706400 (DIN Links)
Art. nr. 706410 (DIN Rechts)



Opvulling
Art. nr. 700006
Sluitkom
Art. nr. 707022